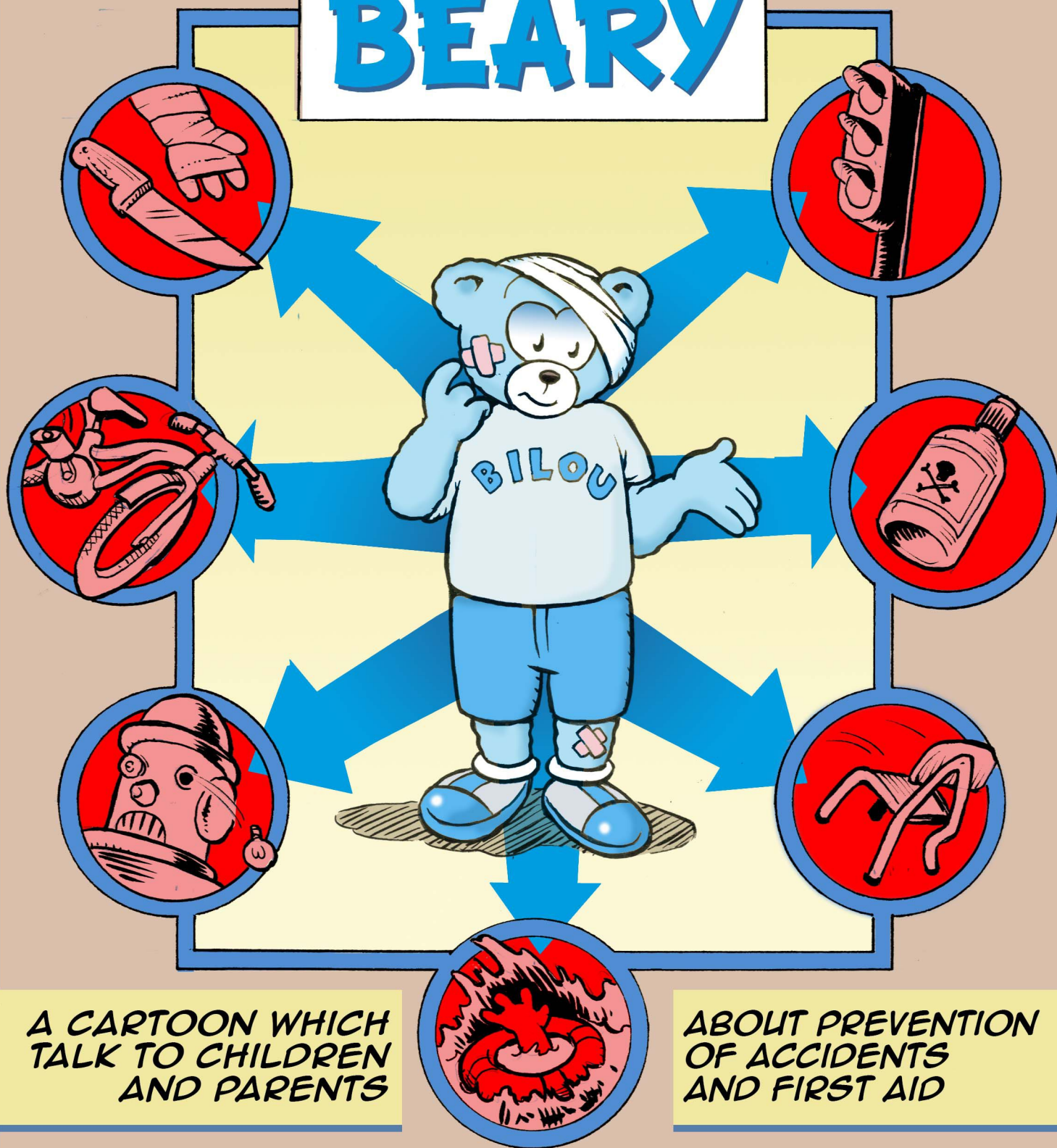


**SERGE  
DUTFOY**

**OLIVIER  
JAMANN**

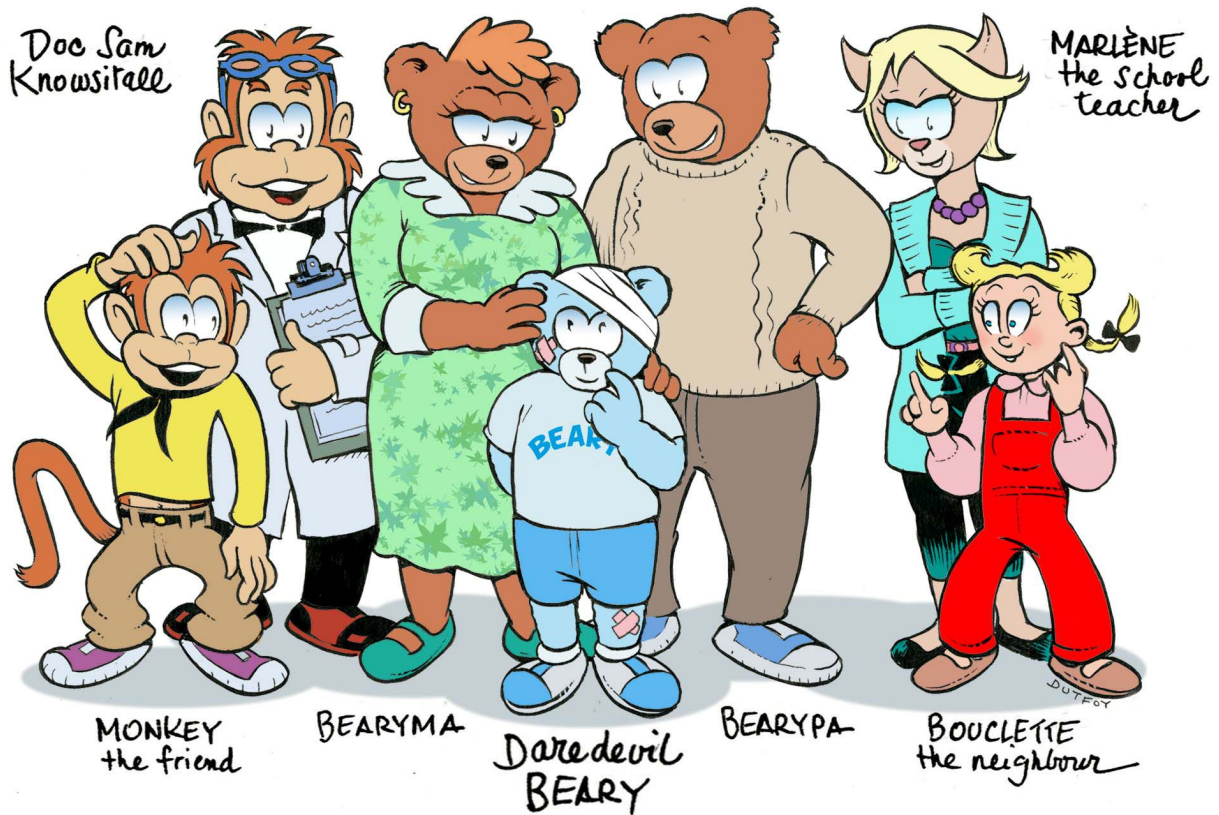
# **WATCH OUT DAREDEVIL BEARY**



**DaredevilBeary Publishing**

# WATCH OUT DAREDEVIL BEARY

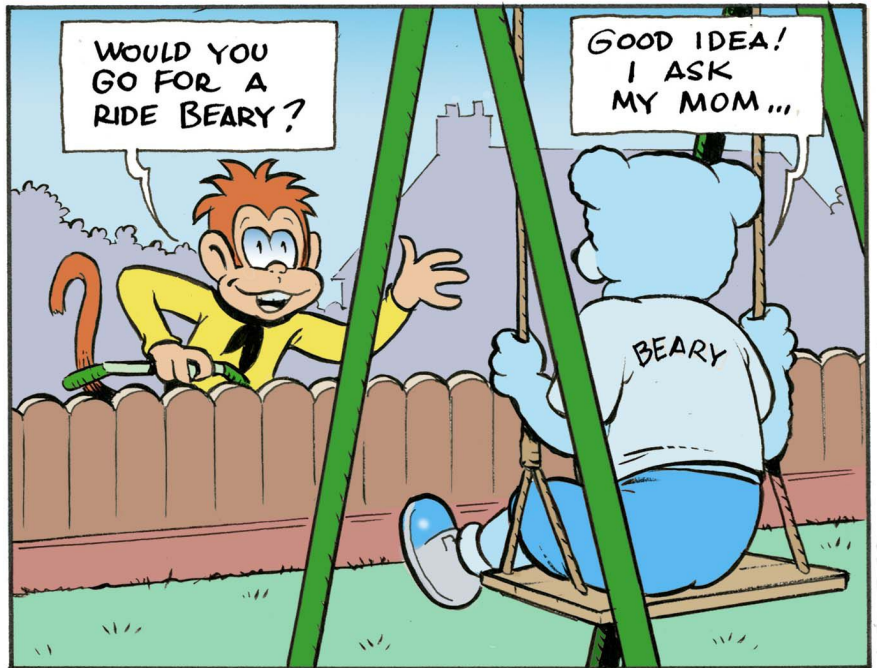
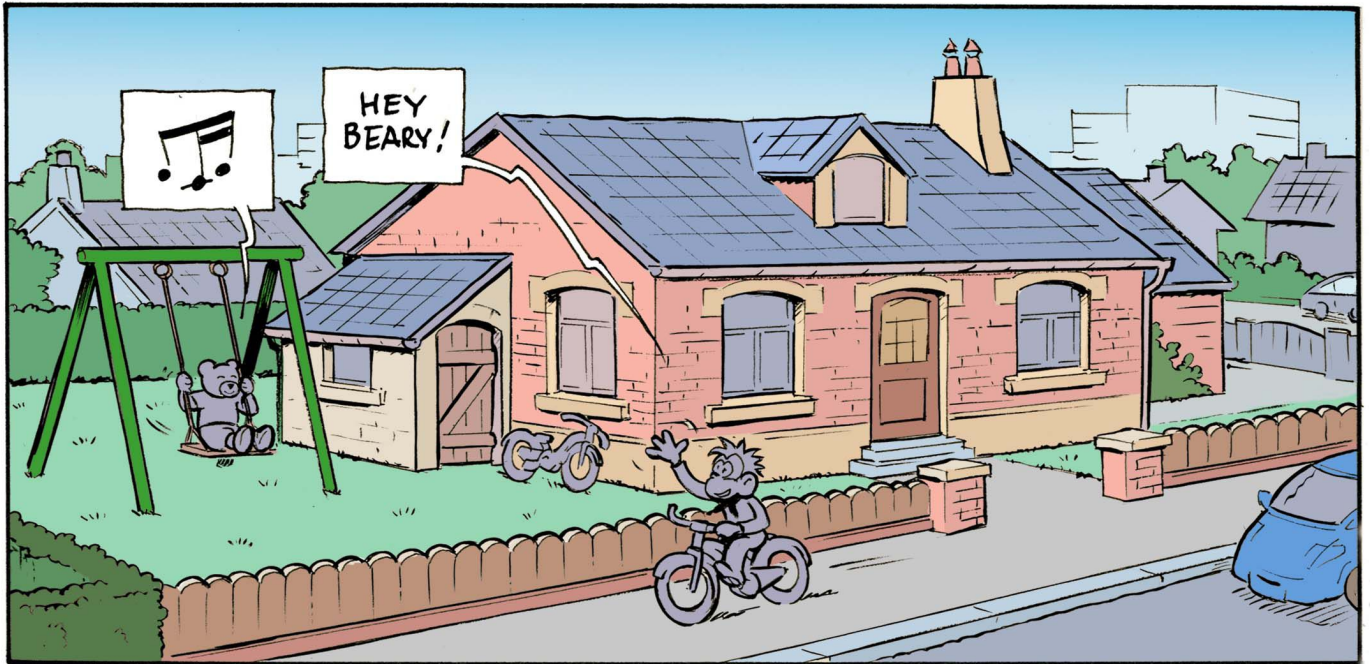
**Drawings: Serge Dutfoy**  
**Design and script: Olivier Jamann**  
**Translation: Nathalie Canocluzeau**





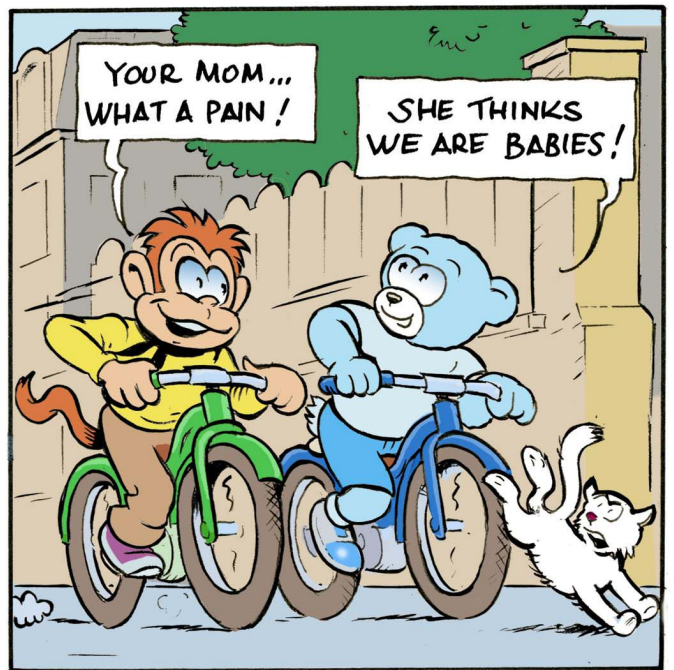
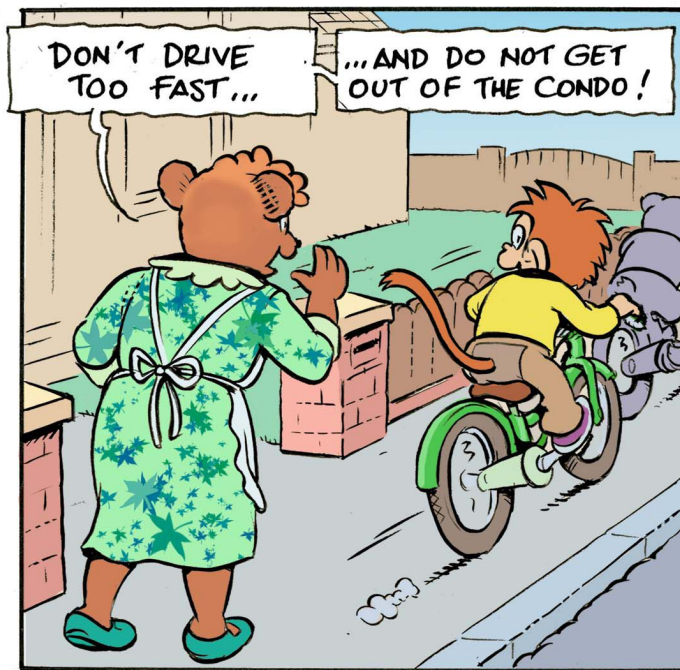
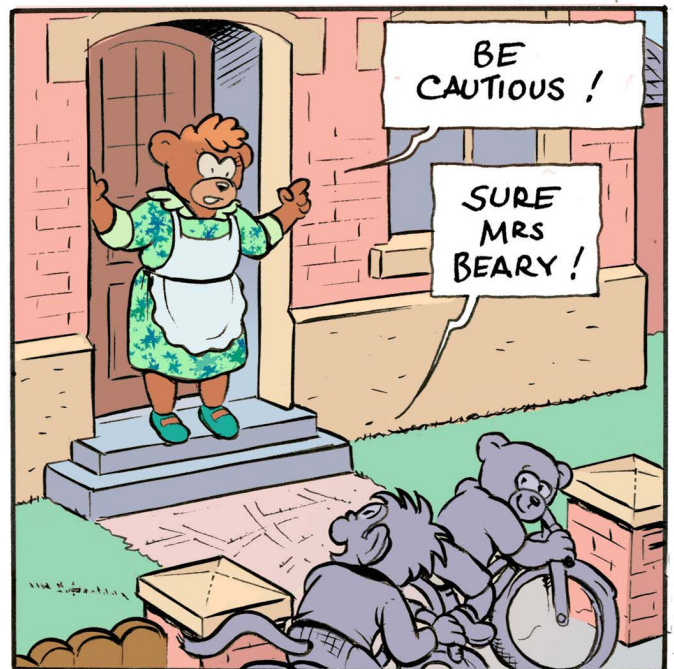
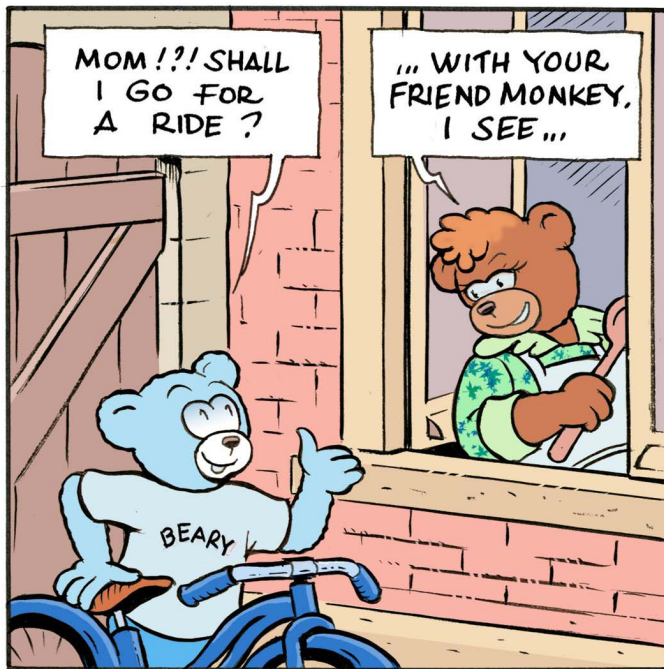
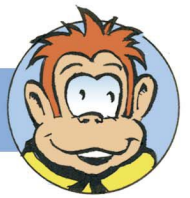


# Beary makes a race





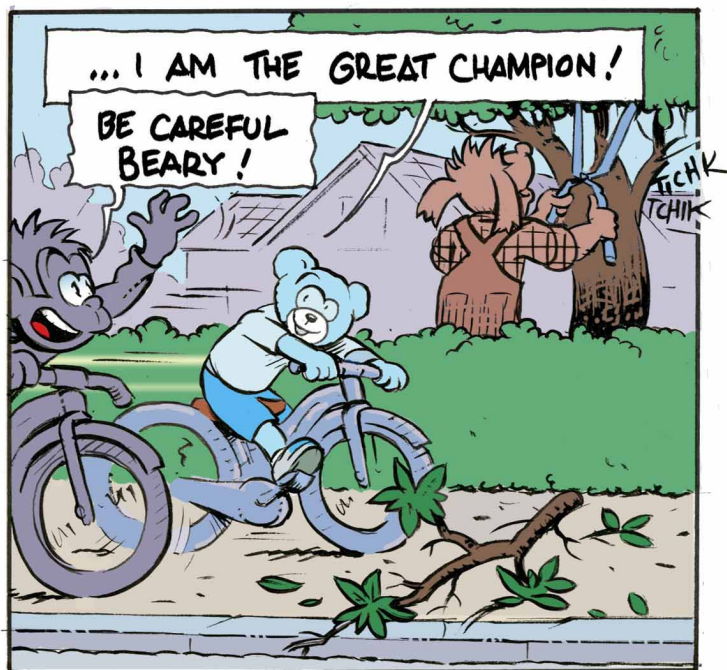
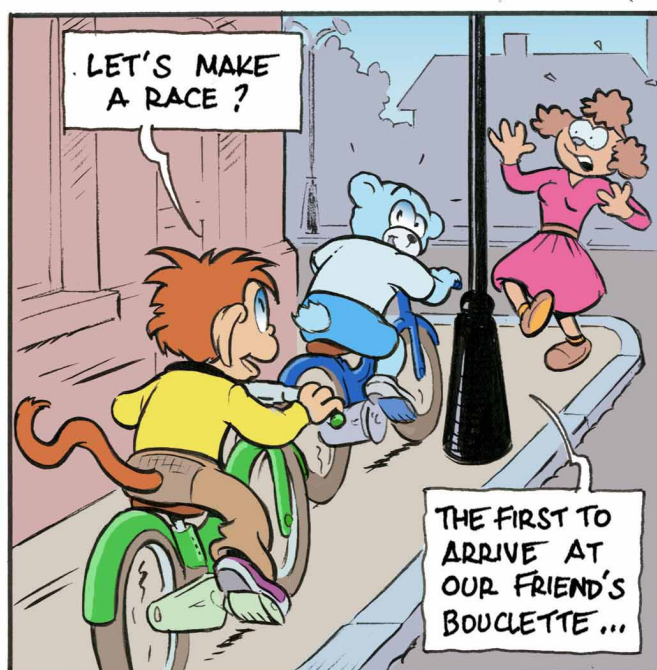
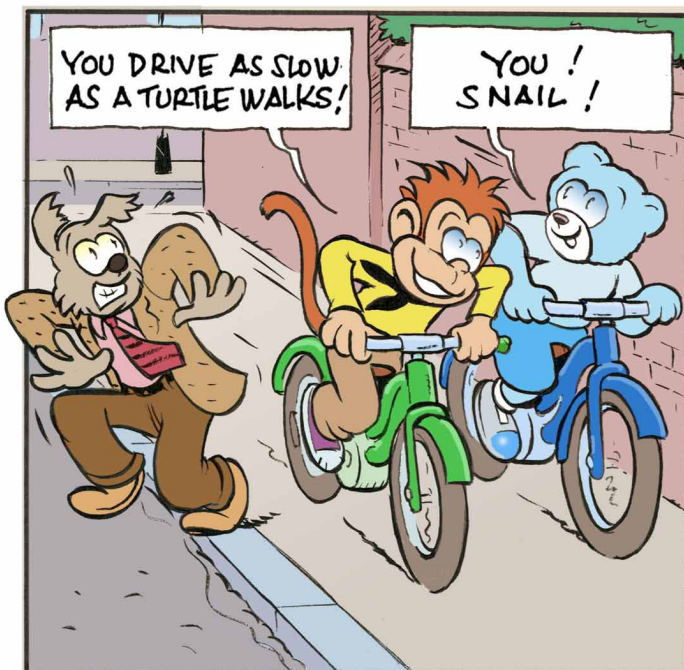
# Beary makes a race







# Beary makes a race



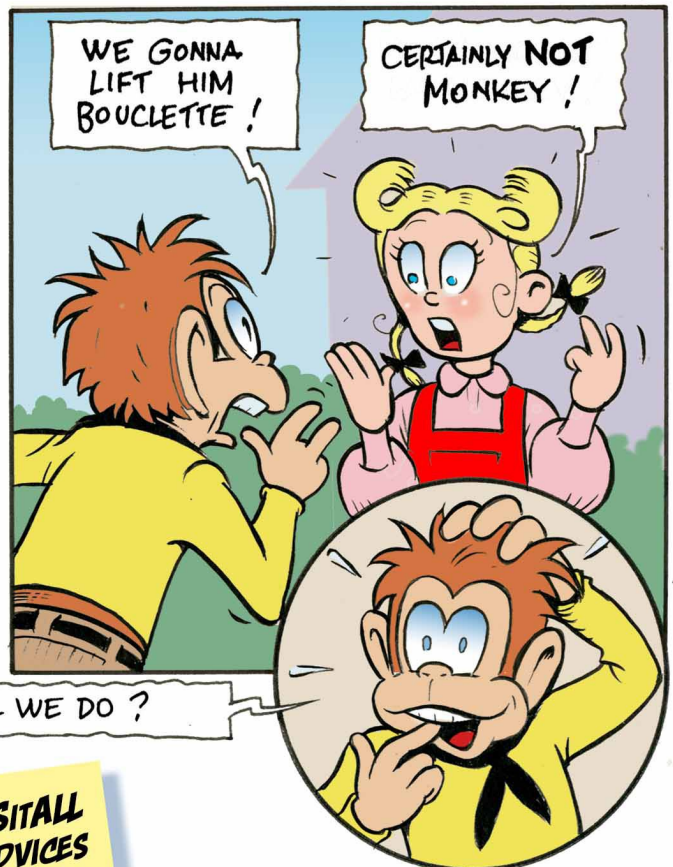
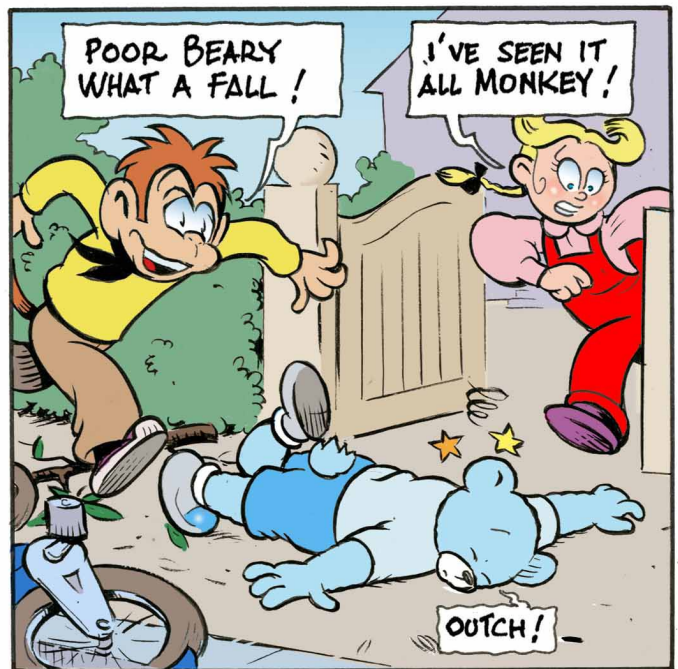
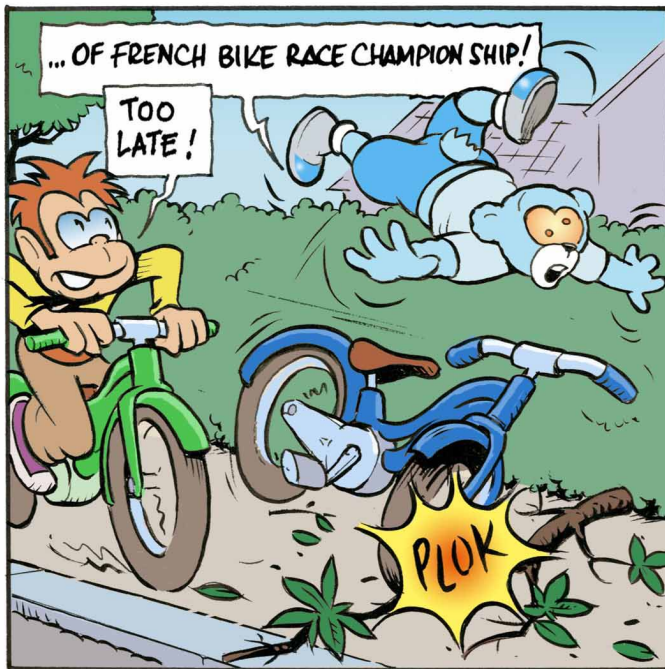
## PARENTS SPECIAL



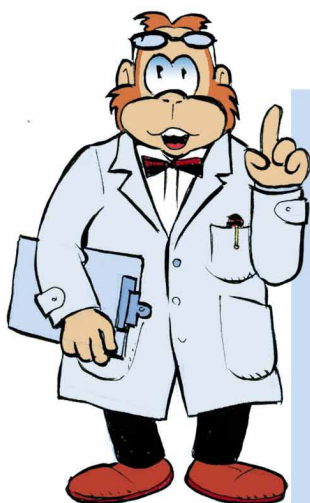
*Wearing a helmet will prevent from direct cranium trauma, and absorb shocks of potential fall even at low speed. Brain injuries may drive to permanent incapacities.*



# Beary makes a race



SO , WHAT SHALL WE DO ?



## Doc SAM KNOWS ALL ADVICES

After the fall,  
if injured is able to talk,  
**do not move him**  
and **call ems at XXX.**  
If possible, hold injured head  
so that he does not move.







# Beary and the two-legged chair



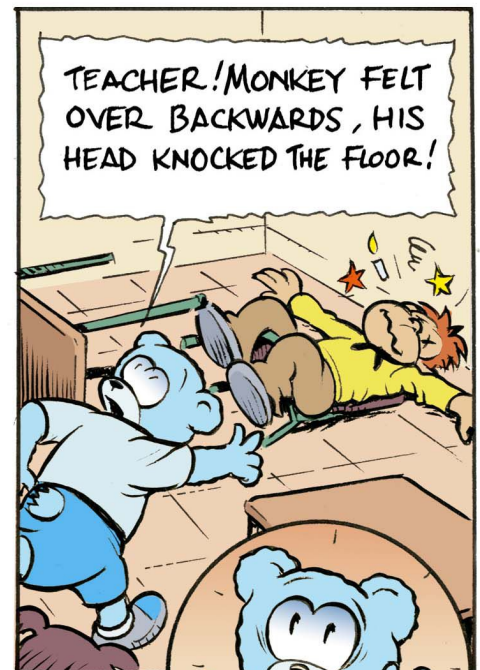
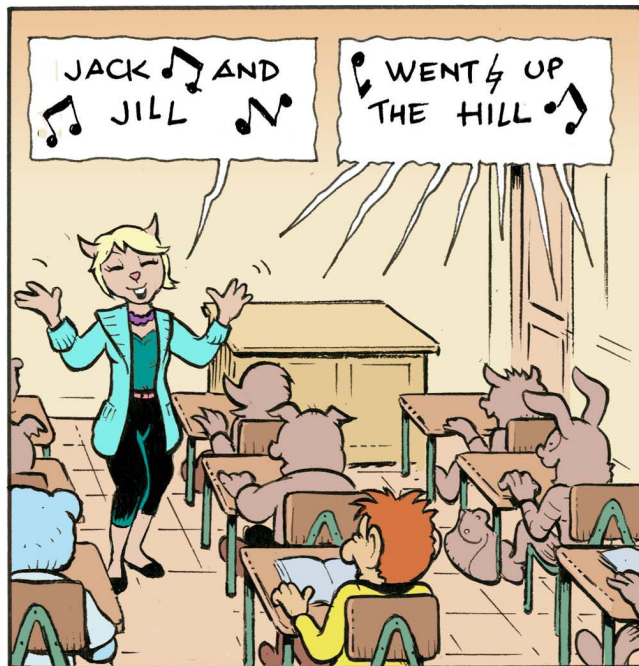
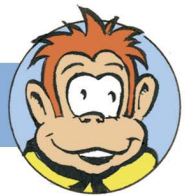
## PARENTS SPECIAL



Remind  
your kid  
to **listen**  
and **follow**  
teacher's advice  
and instructions.



# Beary and the two-legged chair



## Doc SAM KNOWS IT ALL ADVICES

After a fall, if the victim doesn't react, favour body side position. Unconsciousness must be considered as vital threatening emergency.

Unconsciousness

